

class **16** m

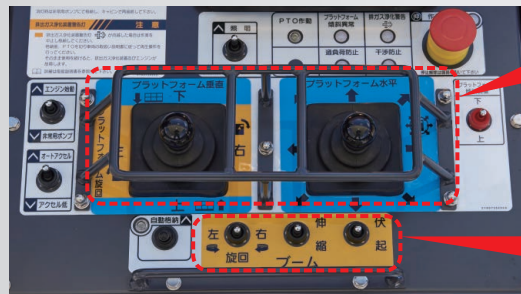
Max. floor height Max. working radius
15.6 m - 10.4 m

Max. load capacity
1000 kg

① Highly manoeuvrable 4-stage boom for even greater convenience!

⇒ A 4-stage boom has been used with each boom shorter in length. The overall boom is shorter when fully retracted, which helps to avoid contact with surrounding objects and make handling the platform easier.

② Easy operations boost efficiency



Special levers for vertical / horizontal movement

Switches for standard operations such as extend/retract, raise/lower and rotation

⇒ Introducing special "vertical / horizontal movement" levers for straight-line vertical / horizontal / diagonal movements. Move anywhere with one-touch operation.

③ Safer at night too! Illuminated control panels

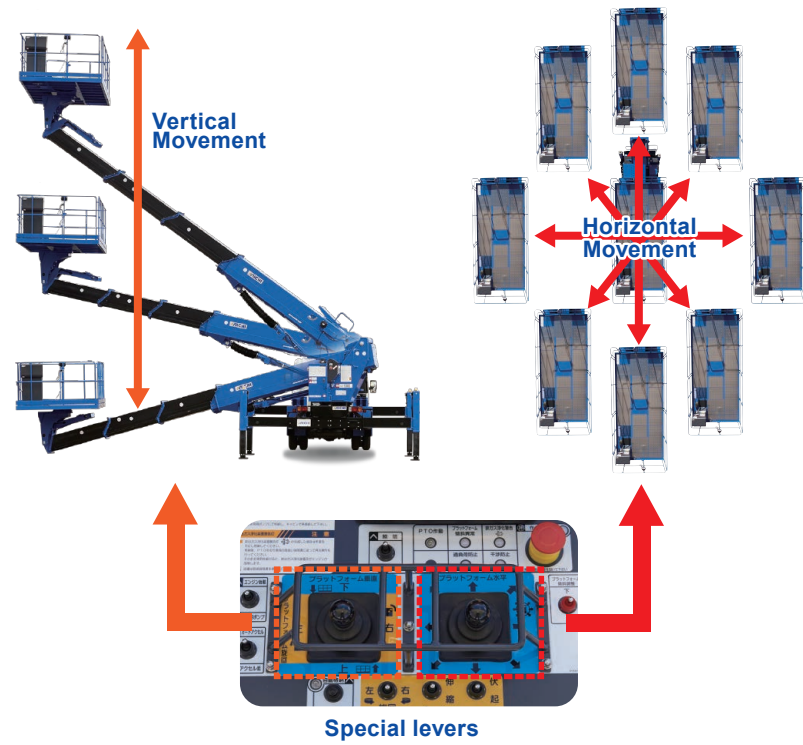


⇒ Outrigger controls, upper controls and lower control are all illuminated as a standard feature.



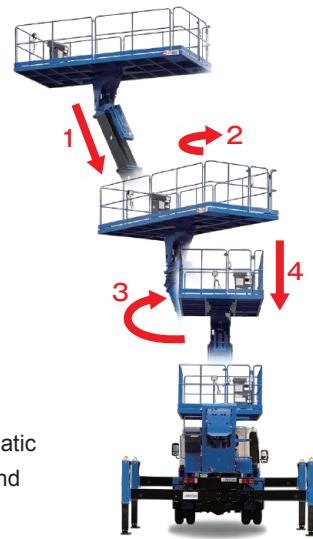
FUNCTIONS

VERTICAL / HORIZONTAL MOVEMENT



This movement increases work efficiency along continuous surfaces such as tunnel walls or during horizontal work under bridges.

AUTOMATIC PLATFORM STOWAGE



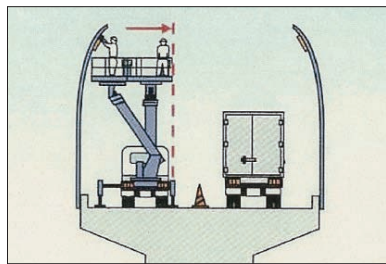
Stows by fully automatic control of platform and boom functions.

VOICE ALARM SYSTEM



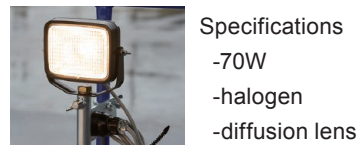
OPTIONS

EXCEEDING VEHICLE WIDTH PREVENTION SYSTEM



This system prevents contact and collision accidents with vehicles passing alongside. It prevents the platform from moving beyond the outrigger.

UPPER WORKING LIGHT



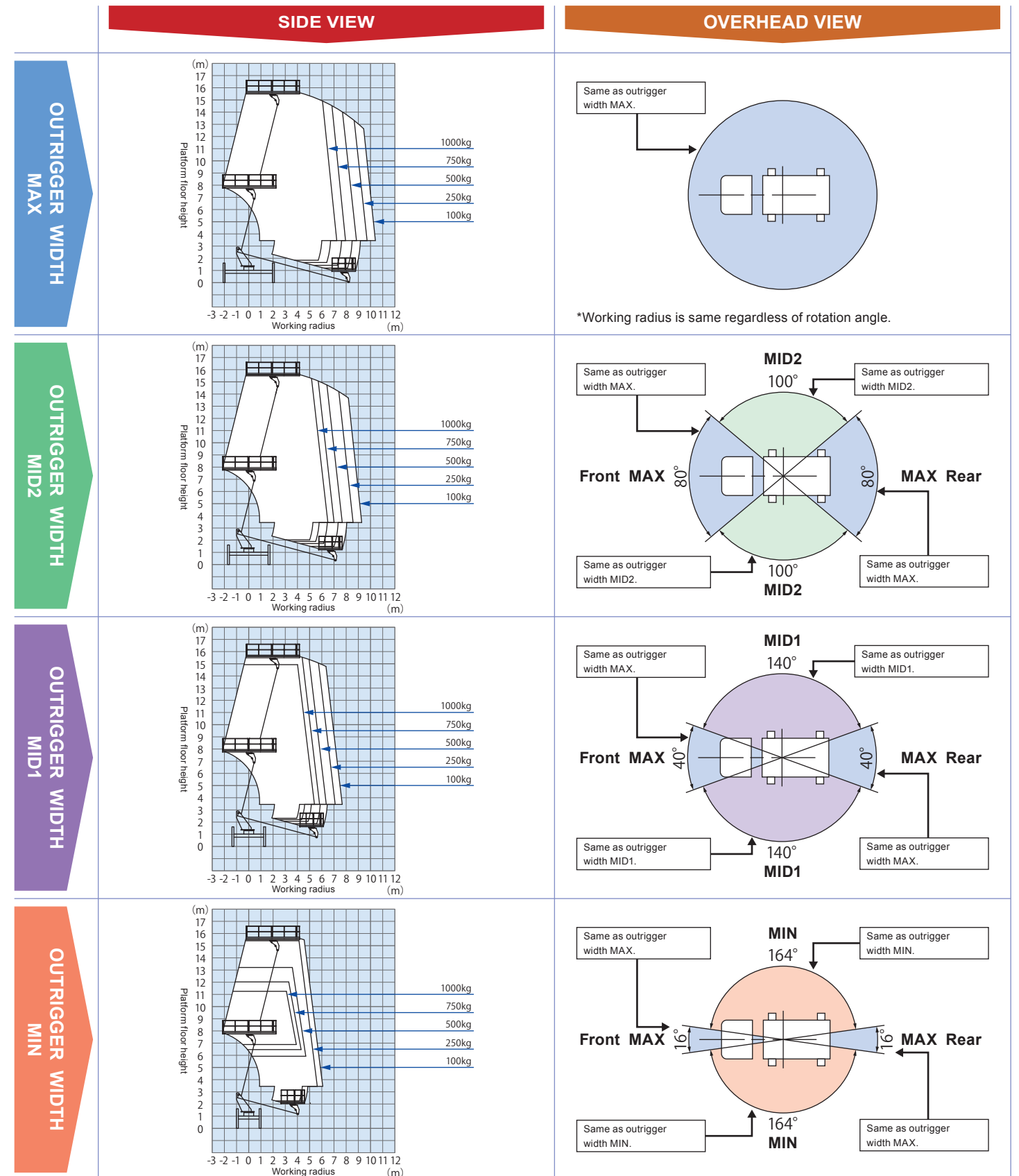
OUTRIGGER MARKER LAMPS



*Japanese model pictured

PERFORMANCE

TZ16C1FS WORKING RANGE DIAGRAMS



note 1 - Working range diagrams do not include boom deflection.
2 - Working range diagrams assume that the jacks are set on a firm surface.
3 - Working range varies based on outrigger width and boom rotation angle.
4 - Minimum boom elevation angle varies by boom rotation angle to avoid interference between cabin/outriggers and boom/platform.

SPECIFICATIONS

DATA & FEATURES

AERIAL DEVICE

Model	TZ16C1FS
Type	Truck-mounted heavy loading type aerial work platform

PLATFORM

Max. load capacity	1,000 kg
Max. floor height*	15.6 m
Max. working radius	10.4 m at 100 kg load 7.22 m at 1000 kg load

Outside dimensions	(W) 1.94 x (D) 4.40 x (H) 1.02 m
Rotation angle	360° continuous

BOOM

Type	4 stages telescopic
Length	4.33 to 12.31 m
Extension stroke	7.98 m
Elevation angle	-15° to 76°
Elevation speed	Up: 45 sec / Down: 45 sec
Extension speed	Extend: 40 sec / Retract: 40 sec

ROTATION DEVICE

Rotation angle	360° continuous
Rotation speed	1.0 rpm

OUTRIGGER

Outrigger width	1.87 to 4.10 m
Outrigger stroke	1.115 m
Jack stroke	0.645 m

MAXIMUM JACK PRESSURE

5,100 kg

SAFETY DEVICES

Hydraulic safety devices (hydraulic safety valve, jack extension safety device, boom elevation safety device, platform levelling safety device), Boom/platform interference prevention system, Boom/cabin interference prevention system, Voice alarm system, Boom interlock system, Jack interlock system, Moment sensing system, Elevation/rotation speed control system, Emergency stop switch, Emergency pump, Control lever guard, Foot pedal, Outrigger lock device

Others

Vertical/Horizontal movement system, Automatic platform stowage system, Engine start/stop system, Automatic accelerator, Pre-operation check system, Control panel light, Rotation gear covers, Sweepers of boom part, Spirit level

Options

Outrigger marker lamps, Upper working light, Exceeding vehicle width prevention system

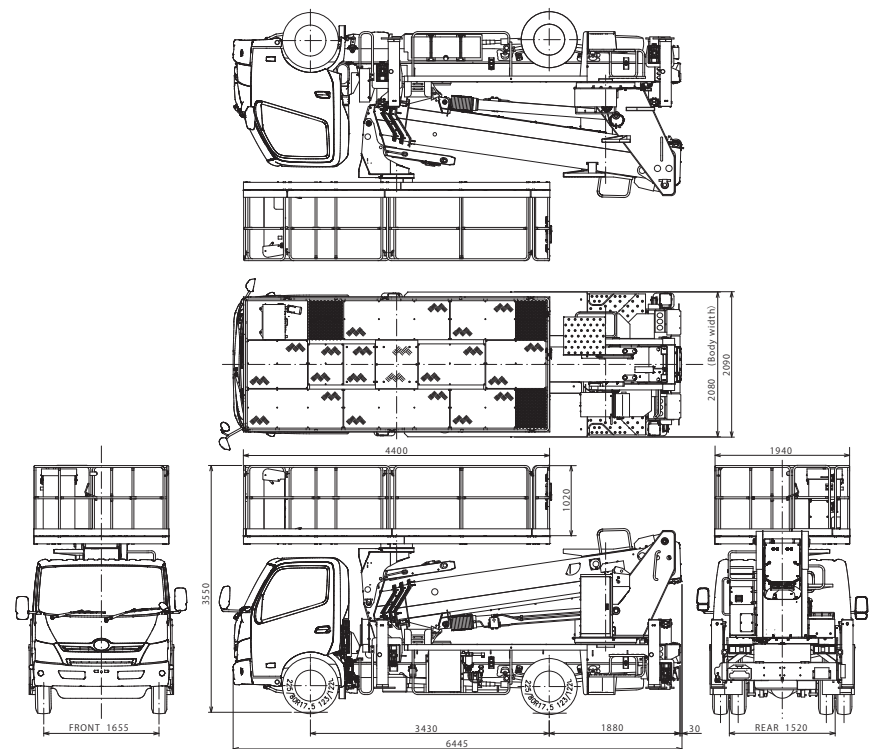
STANDARD ACCESSORIES

Wheel chocks (4 pcs.), Jack bases (4 pcs.)

*Height may vary depending on the specifications of the vehicle the aerial device is mounted on.

VEHICLE DIMENSIONS

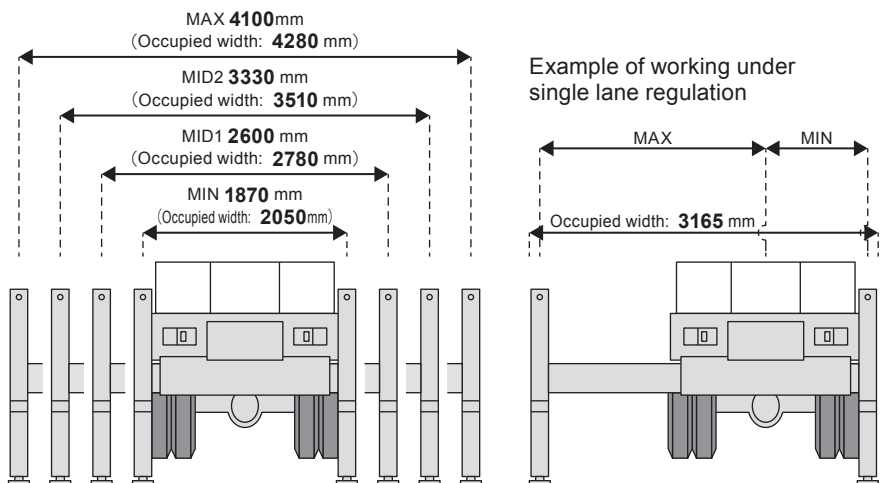
The figures below are for the Japanese model. Dimensions vary depending on chassis configuration.



*Figure units : mm.

EXTENSION / OCCUPANCY DIAGRAM

Extension width images



*Extension width: Distance from center of left outrigger to center of right outrigger

*Occupied width: Distance from edge of left outrigger pad-base to edge of right outrigger pad-base



1152-10 Ryoke Ageo Saitama 362-8550 Japan
TEL:+81-48-781-6813 URL:<http://www.aichi-corp.jp>

DISTRIBUTOR

Safety instructions



- Operator of the machine must receive safety training to ensure safe operations. Incorrect use of the machine can cause serious injury or death. All personnel are requested to receive safety training and only trained and authorized personnel are permitted to operate the machine.
- Ultimate compliance to national safety regulations is the responsibility of the user and their employer.
- All owners and users of the machine must read, understand, and comply with all applicable regulations.

*Due to continuous product improvements, we reserve the right to make specification and/or equipment changes without prior notice.

*The photos and/or drawings in this brochure are for illustrative purpose only.

*This information, while believed to be completely reliable, is not to be taken as a warranty for which we assume legal responsibility.