



SK17A

SK22A

SK27A



SKYMASTER



*The photos shown in this catalog are of vehicles with optional equipment.

The SK Series: Designed for Ease of Use

The SK Series is useful in a wide range of situations, such as construction and inspection of infrastructure, as well as large-scale facility maintenance. Designed to be easy for operators to use, this series supports our customers at their work sites.



SKYMASTER

SK17A
SK22A
SK27A

SK17A



GVW 7.5 ton ~ 8.5 ton
Wheelbase 3,365 mm ~ 3,870 mm



Maximum platform height
17.1 m
Maximum platform loading
200 kg

Maximum platform height
22.1 m
Maximum platform loading
200 kg

SK22A



GVW 8.5 ton ~ 10.4 ton
Wheelbase 3,815 mm ~ 4,360 mm



Maximum platform height
27.0 m
Maximum platform loading
200 kg

SK27A



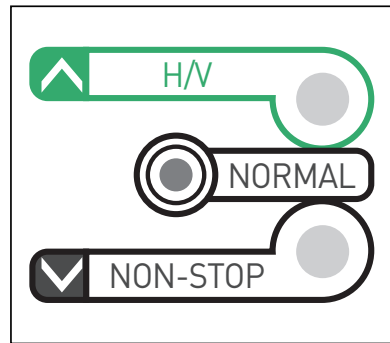
GVW 10.4 ton ~ 15.5 ton
Wheelbase 3,850 mm ~ 4,360 mm



POINT 1

Wide range of features available! Easy-to-use upper control device

- Switch between three operating modes to smoothly operate the vehicle just the way you want



Horizontal/ vertical (H/V) motion control mode

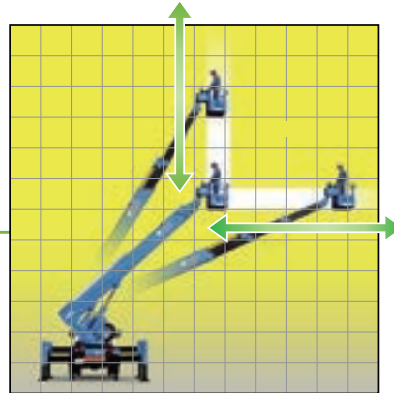
The platform can be moved horizontally or vertically by operating an independent lever.

Independent operations mode

As with previous models, each action can be done with only one operation.

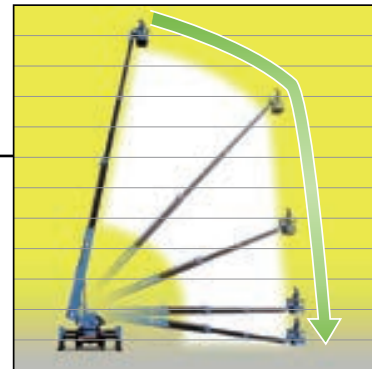
Non-stop control mode

The platform can be moved along the working range control line when lowering the platform.



Easy horizontal and vertical motion with a single lever!

By independently using the extension/retraction and elevation levers, the platform automatically moves horizontally or vertically.



Control stop feature removed

- In this mode, we've removed the control stop feature that prevented the boom from operating outside of the working range control when lowering the boom.
- If the working range control is activated to prevent the vehicle from overturning when lowering the boom, the boom retraction will automatically work in tandem to smoothly move the platform along the working range control line.



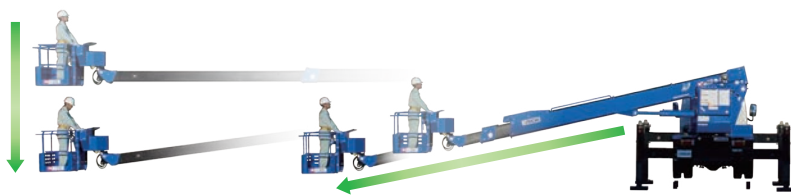
POINT 2

Various interference prevention systems that help prevent contact-related accidents

- The boom won't bump into the ground or the vehicle

The boom will automatically stop when it comes near the cabin, outrigger or the ground (the surface level extending from where the vehicle is placed). This helps prevent contact-related accidents that occur due to operating error.

» Ground interference prevention system



Note: this is limited to flat roads.

» Cabin interference prevention system



POINT 3

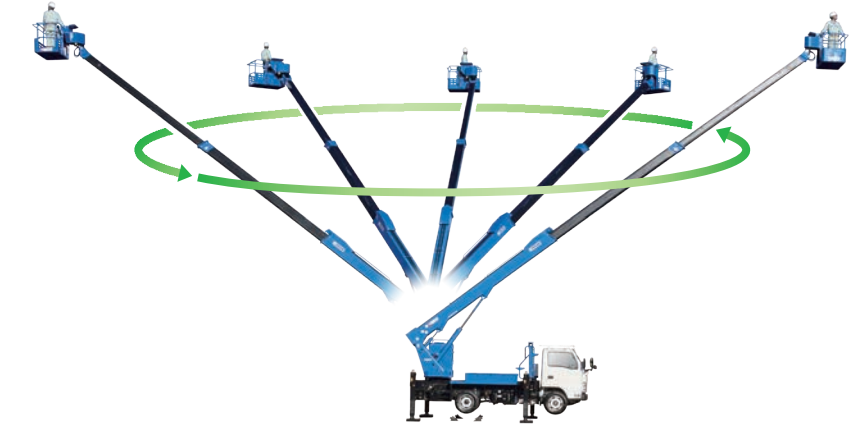
Offers free movement in all four directions! Same working range in all directions

The SK17A and SK27A* offer the same working range in all directions, avoiding control restrictions at any boom rotation angle.

This reduces inefficiencies that occur when the platform will not go where you want due to control restrictions, which normally requires moving and setting up the vehicle again.

*When the outrigger is fully extended.

*Excludes the control range required to prevent cabin interference and ground contact.



POINT 4

Highly maintainable. Diagnostics can be quickly performed in the event of trouble.

The hydraulic valve and electrical box are located together inside the large maintenance door, making inspections and maintenance work more efficient.

You can quickly and accurately check whether the vehicle has malfunctioned and where the problem lies by looking at the error checker lights.



» Large maintenance door

CHECK	◀ [Indicator] ▶	
OVER LOAD	PLATFORM OVERLOAD	PLATFORM OVER-PRESSED
FAILURES	SYSTEM ERROR	LOAD SENSOR
	ROTATION SENSOR	OUTRIGGER EXTENSION SENSOR
	BOOM LENGTH SENSOR	BOOM ANGLE SENSOR
	RESET	See the operation manual for further details.

» Error checker

Options

Part of vehicle	Equipment	Remarks
Platform	Handrail guards	Reduces the risk of hands getting pinched in the event of a collision
	Upper control panel light	Assists short-range visibility when operating the vehicle
	Safety switch	All operations stop when the wire is pushed
	Upper control light	Assists in visibility for the operator
	LED upper control light	Assists in visibility for the operator
	100 V power outlet	Connect to an electric generator for a 100 V power supply on the platform
Sub-frame	Lower control light	Assists in visibility for the operator
	Lower control panel light	Assists short-range visibility when operating the vehicle
Outrigger/jack	Jack marker lamps	Lights up and warns those around the vehicle when a PTO is connected
Onboard equipment	Yellow wheel chocks	Improves visibility, and helps operators to remember to put in or remove the wheel chocks

Optional equipment (examples)



» Handrail guards 



» Jack marker lamps 



Note: SK17A vehicle with optional equipment shown



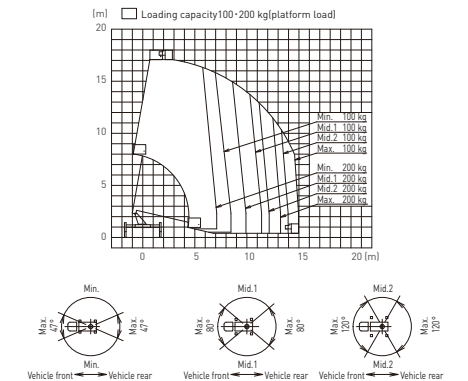
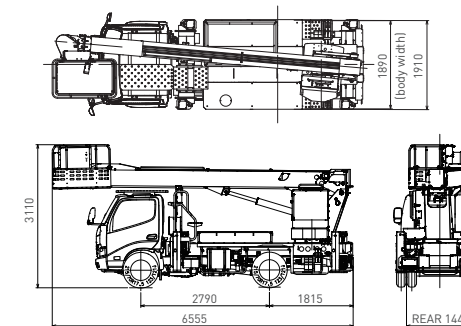
» 100 V power outlet 



» LED upper control light 

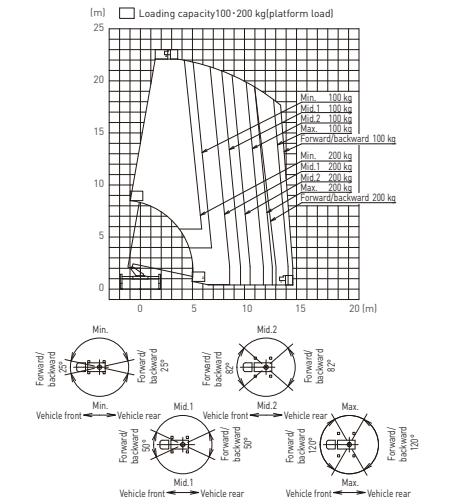
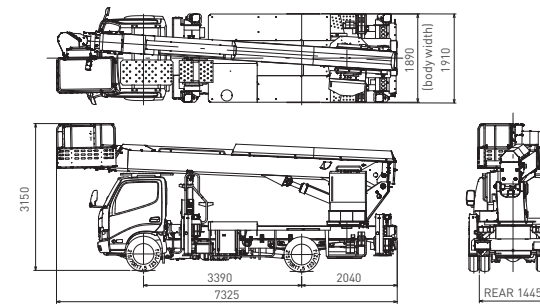
Vehicle dimensions and working range diagram

SK17A



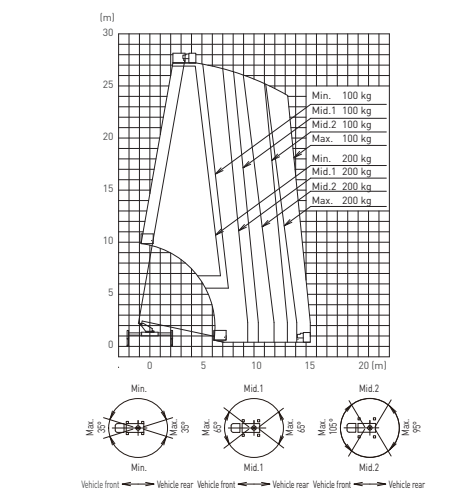
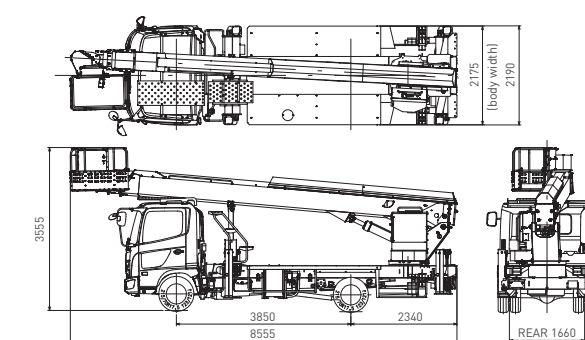
- The working range when the outrigger is fully extended is the same for all directions.
 - The working range will change according to the boom rotation angle when the outrigger's extension width is at min., mid. 1 or mid. 2.
- ⇒ See the overview diagram at right for details.

SK22A



- The working range will change according to the boom rotation angle.
- ⇒ See the overview diagram at right for details.

SK27A



- The working range when the outrigger is fully extended is the same for all directions.
 - The working range will change according to the boom rotation angle when the outrigger's extension width is at min., mid. 1 or mid. 2.
- ⇒ See the overview diagram at right for details.

Note 1: Vehicle dimensions may vary depending on the chassis.

Note 2: The working range diagram does not take into account the flex of the boom.

Note 3: The working range diagram assumes that the jack is set up on a level surface with solid ground.

Note 4: The working range will change according to the outrigger's extension width and the boom rotation angle.

Note 5: The minimum elevation angle on this vehicle differs depending on the boom rotation position, in order to avoid the boom and platform interfering with the chassis cabin, the outrigger or other parts of the vehicle.

Specifications


SKYMASTER
SK17A / SK22A / SK27A


SK17A / SK22A / SK27A SKYMASTER

MODEL TYPE AND NAME			
Model		SK17A	SK22A
Name	Vehicle-Mounted Aerial Working Platform		
PLATFORM			
Rated Working Load	200 kg or 2 persons		
Floor Height	17.1 m	22.1 m	27.0 m
Working radius (with 100 kg load)	15.0 m	14.6 m	15.4 m
Inner Dimensions (L x W x H)	1.2 m x 0.7 m x 0.9m		
Rotation Angle	L : 95° R : 100°		
BOOM			
Type	3-stages telescopic	4-stages telescopic	
Length	6.1 m - 15.3 m	6.8 m - 20.6 m	8.1 m - 25.7 m
Telescopic stroke	9.2 m	13.8 m	17.6 m
Extension / retraction speed	45 sec / 40 sec	50 sec	60 sec
Elevation angle	-13° - 80°	-12° - 80°	
Elevation speed	Upper controls	35 sec	50 sec
	Lower controls	55 sec	80 sec
ROTATION DEVICE			
Rotation angle	360° continuous		
Rotation speed	Upper controls	1.0 rpm	
	Lower controls	0.5 rpm	
OUTRIGGER			
Width	Min	1.7 m - 2.4 m	2.0 m - 2.8 m
	Mid. 1	2.4 m - 3.0 m	2.8 m - 3.6 m
	Mid. 2	3.0 m - 3.6 m	3.6 m - 4.3 m
	Max.	3.6 m - 3.7 m	4.3 m - 4.4 m
Outrigger stroke	1.0 m		1.2 m
Jack stroke	0.5 m		0.6 m
SAFETY DEVICES			
Hydraulic safety devices (relief valve, jack extension safety device, boom elevation safety device, boom telescope safety device, platform leveling safety device), emergency stop switch, foot switch, moment sensing system (AMCS), elevation/rotation speed control system, lever guard, lanyard anchorage point, emergency pump, jack interlock system, boom interlock system, cabin/boom interference prevention system, platform/ground interference prevention system, platform over-press sensing system, overload sensing system			
OTHER DEVICES			
Automatic platform stowage system, vertical / horizontal movement system, automatic accelerator, non-stop control system, error checker, roof steps, spirit level, cargo space (SK17A only)			
STANDARD ACCESSORIES			
Wheel chocks, Jack bases			



1152-10 Ryoke Ageo Saitama 362-8550 Japan
TEL: +81-48-781-6907 URL: <http://www.aichi-corp.jp>

<p>Points of Caution Regarding Safety</p> 	<ul style="list-style-type: none"> ● Operators who use this vehicle for working in high places (aerial work) must hold the following qualifications. <ul style="list-style-type: none"> • Completion of special training or skill workshops for operating vehicles used in aerial work, with platforms for which the maximum height is 2 m or more but less than 10 m. • Completion of skill workshops for operating vehicles used in aerial work, with platforms for which the maximum height is 10 m or more. ● Aerial work at heights of 2 m or more during inclement weather such as high winds (with an average wind speed of 10 m/sec. or more in a 10-min. interval), heavy rain (with concentrated rainfall of 50 mm or more) or heavy snow (with concentrated snowfall of 250 mm or more) is prohibited by law. ● Be sure to thoroughly read the "Operating Manual" before using this vehicle, in order to use it correctly.
<p>*The specifications, equipment names, external design and structure of this product are subject to partial change without notice. *The colors of vehicles and equipment shown in this publication may look different from the actual product, due to the photography and ink used in printing. *The photos shown are of vehicles with optional equipment. *Figures shown are reference values. *Some optional equipment shown may not be available for certain models or grades.</p>	

*Optional equipment is indicated by the  mark.

i2009-1000①