



# SR19CSM SR21CSM

**SKYMASTER**

class **19** m

Max. floor height    Max. working radius  
**18.7 m - R15.5 m**

Max. load capacity    Machine Weight  
**250 kg - W12,650 kg**

class **21** m

Max. floor height    Max. working radius  
**20.7 m - R18.8 m**

Max. load capacity    Machine Weight  
**250 kg - W15,650 kg**

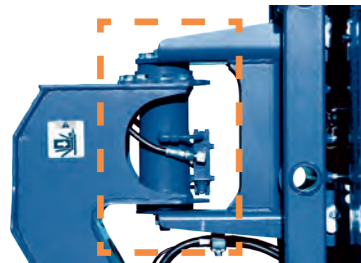
\*Machine weight may vary depending on options and/or local standards.



\*\*SR21CSM with optional equipment pictured.

## FEATURES

### Reduced risk of damage to rotation device



When a large load is applied to the basket, the basket rotation mechanism with hydraulic rotary actuator operates to release the load and decrease risk of damage.

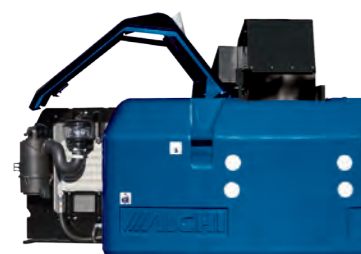
\*Damage may occur when force is applied at rotation end and/or past rotation angle.

### Improved safety devices



Bar-type touch switch is utilized. It can correspond to basket deformation and it is more reliable than previous wire-type switch.

### Improved engine maintenance



A gull-wing cover and swing-out engine base are utilized. The ease of maintenance and cleaning are improved.

Engine slides out

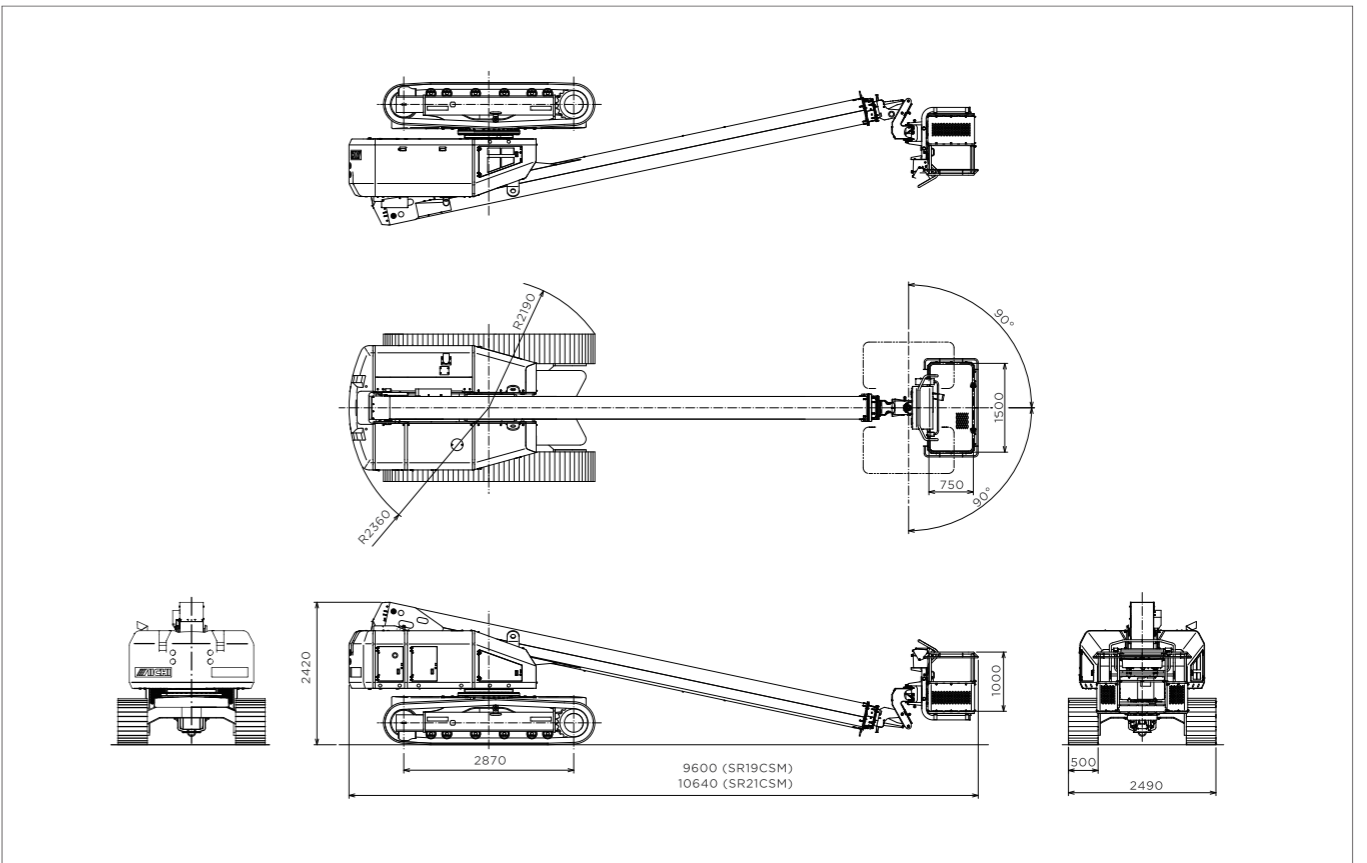
### Reduced environmental burden and improved fuel efficiency



New Tier 4 engine reduces environmental burden. In addition, engine speed control in accordance with work load increases fuel efficiency.

(Tier 2, Tier 3 engine can also be available)

## MACHINE DIMENSIONS



## EQUIPMENTS



### Upper working light (option)

Specifications  
• 45W • Halogen • Diffusion lens



### Cylinder boots (option)

Can be attached to the elevation, steering, and lower leveling cylinders. Protects the cylinder rod from dust and weld spatter.

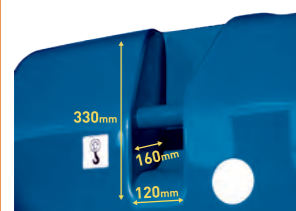


### Rotation beacon (option)

Illuminates while the engine is running and indicates to nearby personnel that the machine is operating.

standard equipment

option



### Hoist points

These are hoist hook attachment points.  
Opening dimensions :  
(H) 330mm x (L) 120mm x (D) 160mm  
Diameter of bar: 50mm  
Located approx. 1.7m from the ground



### Rubber pads (option)

Reduce the potential for damage to the travel surface.



### Reinforced sweepers (option)

These sweepers reduce the risk of foreign objects entering the inside of the boom.

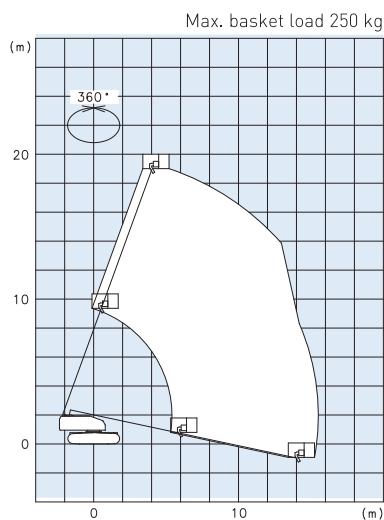
## SPECIFICATIONS

MODEL/TYPE	Model		SR19CSM	SR21CSM
		Type		Crawler type aerial work platform
PLATFORM	Max. load capacity (crews)		250kg (2persons)	
	Max. floor height		18.7m	20.7m
	Max. working radius		15.5m	18.8m
	Inside dimensions		(L)0.75 x (W)1.5 x (H)1.0m	
	Rotation angle		L:90° / R:90°	
BOOM	Type		3 stages telescopic	
	Extension stroke/speed		10.26m / 35 sec (extend/retract)	11.3m / 40 sec (extend/retract)
	Elevation angle/speed		— 12° to 70° / 40 sec (up/down)	
ROTATION DEVICE	Rotation angle		360° continuous	
	Rotation speed		0.75rpm	
PERFORMANCE	Traveling speed	stowed	0 to 1.8km/h	
		raised	0 to 0.5km/h	
	Gradeability	stowed	51% [27°]	40% [22°]
		Allowable tilt angle	3°	
	Turntable tailswing radius		2.36m	
	Machine weight*		12,650kg	15,650kg
	Max. ground bearing pressure*		69kPa	90kPa
	Turning radius		2.19m	
ENGINE	Max. output		51.7kW (2,500rpm)	
	Max. torque		2.41kW (1,625rpm)	
	Displacement		3.318L	

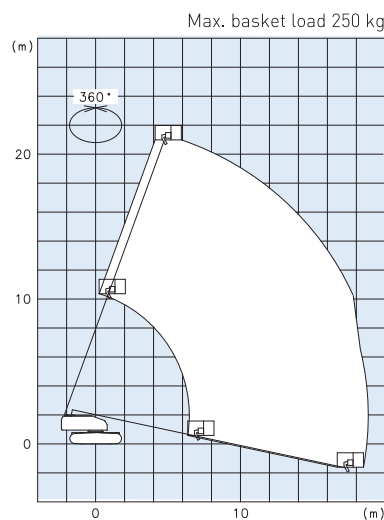
\*Machine weight may vary depending on options and/or local standards.

## WORKING RANGE DIAGRAMS

### SR19CSM



### SR21CSM



- note1 - Working range diagrams do not include boom deflection.  
 2 - Working range diagrams are the same regardless of boom rotation angle.  
 3 - Working range diagrams are based on the machine being on a level surface.  
 4 - Counterweight must be installed in its designated location.  
 5 - Maximum load capacity may vary depending on options equipped.



1152-10 Ryoke Ageo Saitama 362-8550 Japan  
 TEL:+81-48-781-6907 URL:<http://www.aichi-corp.jp>

DISTRIBUTOR

Safety instructions



- Operator of the machine must receive safety training to ensure safe operations. Incorrect use of the machine can cause serious injury or death. All personnel are requested to receive safety training and only trained and authorized personnel are permitted to operate the machine.
- Ultimate compliance to national safety regulations is the responsibility of the user and their employer.
- All owners and users of the machine must read, understand, and comply with all applicable regulations.

\*Due to continuous product improvements, we reserve the right to make specification and/or equipment changes without prior notice.

\*The photos and/or drawings in this brochure are for illustrative purpose only.

\*This information, while believed to be completely reliable is not be taken as warranty for which we assume legal responsibility.