



**NACHI**

# *SP10C1SN* *SP12C1SN*

*SKYMASTER*

class **10** m

Max. floor height    Max. working radius  
**9.9 m - R8.8 m**

Max. load capacity    Machine Weight  
**250 kg - W7800 kg**

class **12** m

Max. floor height    Max. working radius  
**12.0 m - R10.0 m**

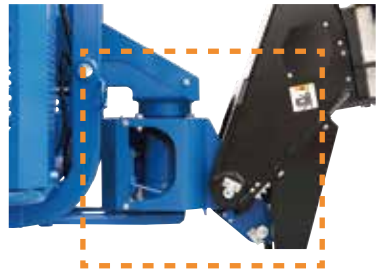
Max. load capacity    Machine Weight  
**250 kg - W8530 kg**



\*SP12C1SN with optional equipment pictured.

## FEATURES

### Reduced risk of damage to rotation device



When a large load is applied to the basket, the basket rotation mechanism with hydraulic rotary actuator operates to release the load and decrease risk of damage.

\*Damage may occur when force is applied at rotation end and/or past rotation angle.

### Improved safety devices



Bar-type touch switch is utilized. It can correspond to basket deformation and it is more reliable than previous wire-type switch.

### Improved engine maintenance



A gull-wing cover and swing-out engine base are utilized. The ease of maintenance and cleaning are improved.

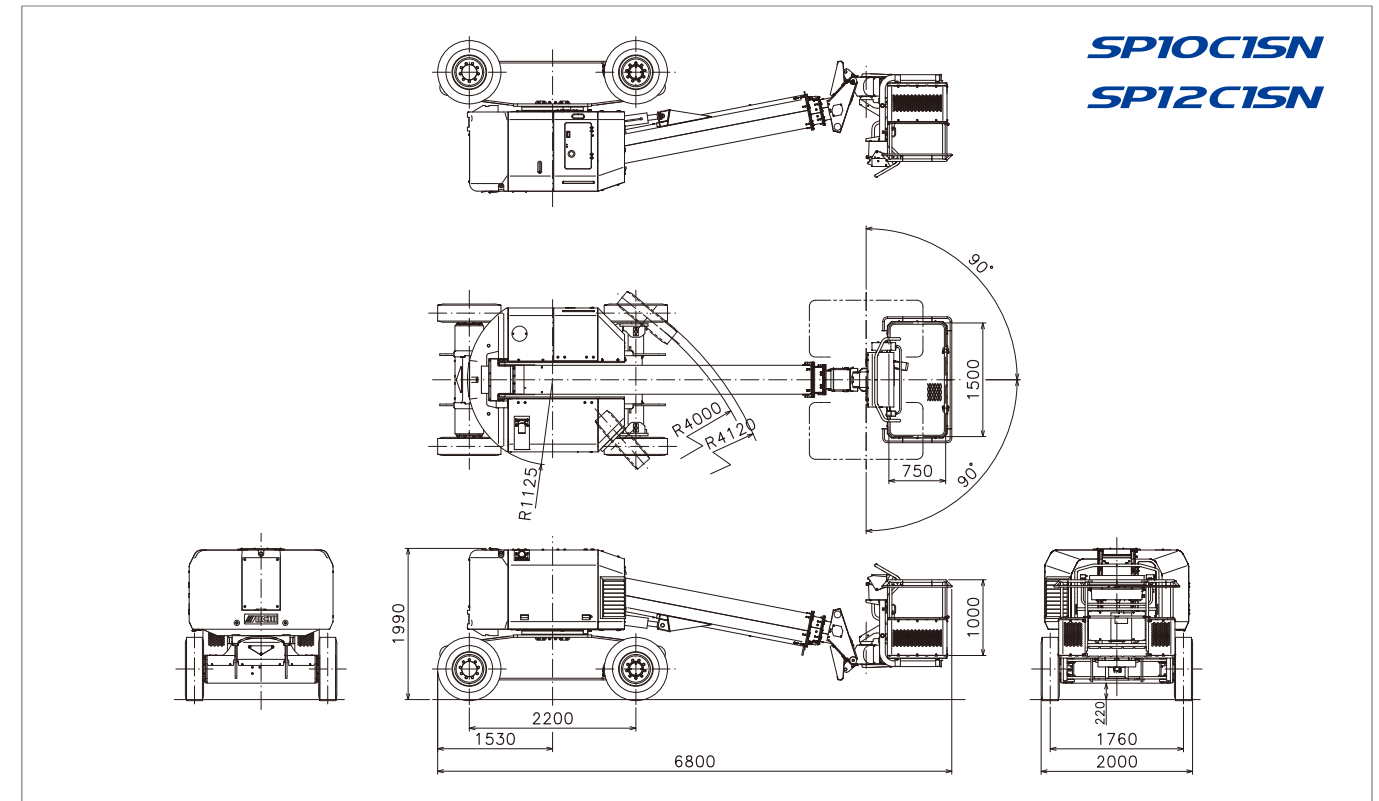
Engine slides out

### Reduced environmental burden and improved fuel efficiency



New Tier 4 engine reduces environmental burden. In addition, engine speed control in accordance with work load increases fuel efficiency.  
(Tier 2, Tier 3 engine can also be available)

## MACHINE DIMENSIONS



## EQUIPMENT

standard equipment

option



### Upper working light (option)

Specifications  
• 45W • Halogen • Diffusion lens



### Headlights (option)

Helps improve visibility in the direction of travel.  
\* Can be installed on front and rear of vehicle.



### Rotation beacon (option)

Illuminates while the engine is running and indicates to nearby personnel that the machine is operating.



### Reinforced sweepers (option)

These sweepers reduce the risk of foreign objects entering the inside of the boom.



### Cylinder boot (option)

Can be attached to the elevation, steering and lower leveling cylinders. Protects the cylinder rod from dust and weld spatter.

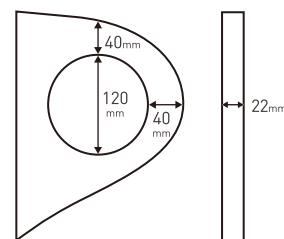


### Non-marking/non-puncture tires (option)

These tires mark less than black tires when traveling.

### Hook rings (front/rear)

Storage rings for the hook.  
Hook thickness: 22 mm  
Ring dimensions shown below.



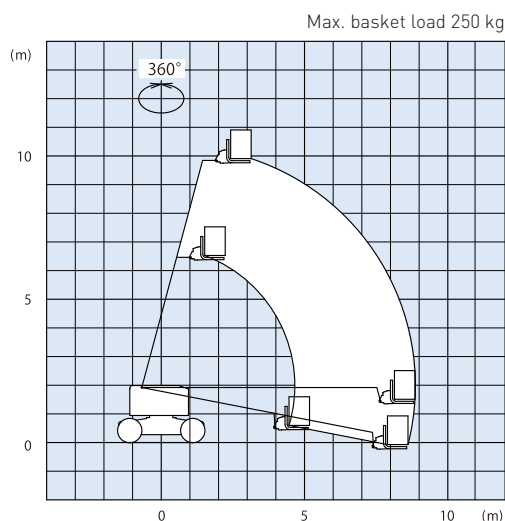
## SPECIFICATIONS

MODEL/TYPE	Model	SP10C1SN	SP12C1SN	
	Type	Wheel type aerial work platform		
PLATFORM	Max. load capacity (crews)	250 kg (2 persons)		
	Max. floor height	9.9 m	12.0 m	
	Max. working radius	8.8 m	10.0 m	
	Inside dimensions	(L) 0.75 x (W) 1.5 x (H) 1.0 m		
	Rotation angle	L:90° / R:90°		
BOOM	Type	3-stage telescopic		
	Extension stroke/speed	3.5 m/20 sec (extend/retract)	5.73 m/25 sec (extend/retract)	
	Elevation angle/speed	-11° to 75°/40 sec (up/down)		
ROTATION DEVICE	Rotation angle	360° continuous		
	Rotation speed	1.0 rpm		
PERFORMANCE	Traveling speed	stowed	0 to 4.0 km/h	
		raised	0 to 1.2 km/h	
	Gradeability (stowed)	25% (14°)		
	Allowable tilt angle	3° [5°-spec optional]		
	Tunable tailswing radius	1.125 m		
	Machine weight *	3°-spec	7800 kg	8530 kg
		5°-spec (option)	8320 kg	9070 kg
	Max. ground bearing pressure *	1210 kPa		
Turning radius (outside of tire)	4.12 m			
ENGINE	Max. output	34.3 kW (2800 rpm)		
	Max. torque	140.4 N-m (1820 rpm)		
	Displacement	2.189 L		

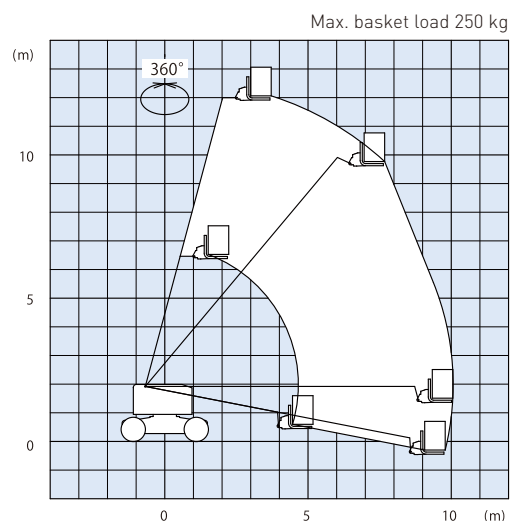
\*Machine weight may vary depending on options and/or local standards.

## WORKING RANGE DIAGRAMS

### SP10C1SN



### SP12C1SN



note

- 1 - Working range diagrams do not include boom deflection.
- 2 - Working range diagrams are the same regardless of boom rotation angle.
- 3 - Working range diagrams are based on the machine being on a level surface.
- 4 - Counterweight must be installed in its designated location.
- 5 - Maximum load capacity may vary depending on options equipped.



1152-10 Ryoke Ageo Saitama 362-8550 Japan  
 TEL:+81-48-781-6907 URL:<http://www.aichi-corp.jp>

DISTRIBUTOR

Safety instructions



- Operator of the machine must receive safety training to ensure safe operations. Incorrect use of the machine can cause serious injury or death. All personnel are requested to receive safety training and only trained and authorized personnel are permitted to operate the machine.
- Ultimate compliance to national safety regulations is the responsibility of the user and their employer.
- All owners and users of the machine must read, understand, and comply with all applicable regulations.

\*Due to continuous product improvements, we reserve the right to make specification and/or equipment changes without prior notice.

\*The photos and/or drawings in this brochure are for illustrative purposes only.

\*This information, while believed to be completely reliable is not be taken as warranty for which we assume legal responsibility.