



# POLEMASTER D70A



# EQUIPMENT



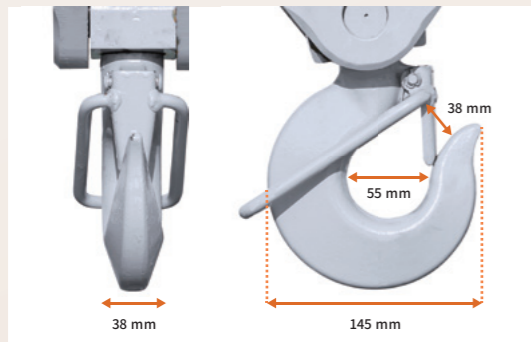
## » Parallel Hook Movement Device

Maintains a constant hook and boom head during boom extension and retraction. This reduces the risk of severed wire rope while the boom is moving.



## » Hook Over-winding Prevention Device

Reduces the risk of severed wire rope caused by over-winding the winch.



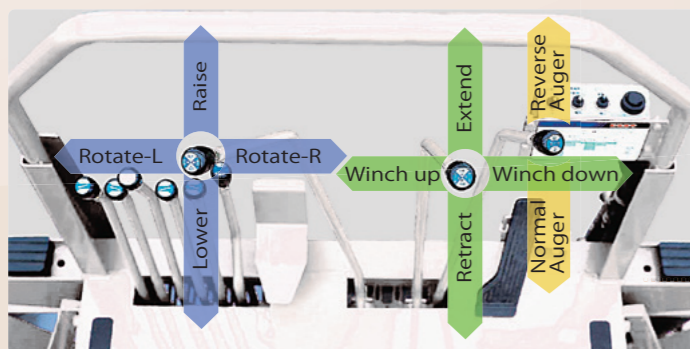
## » Hook Dimensions

\* The dimensions shown are reference values.



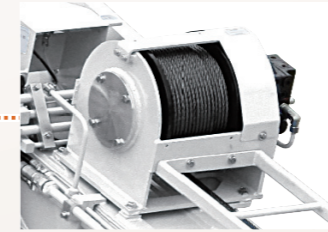
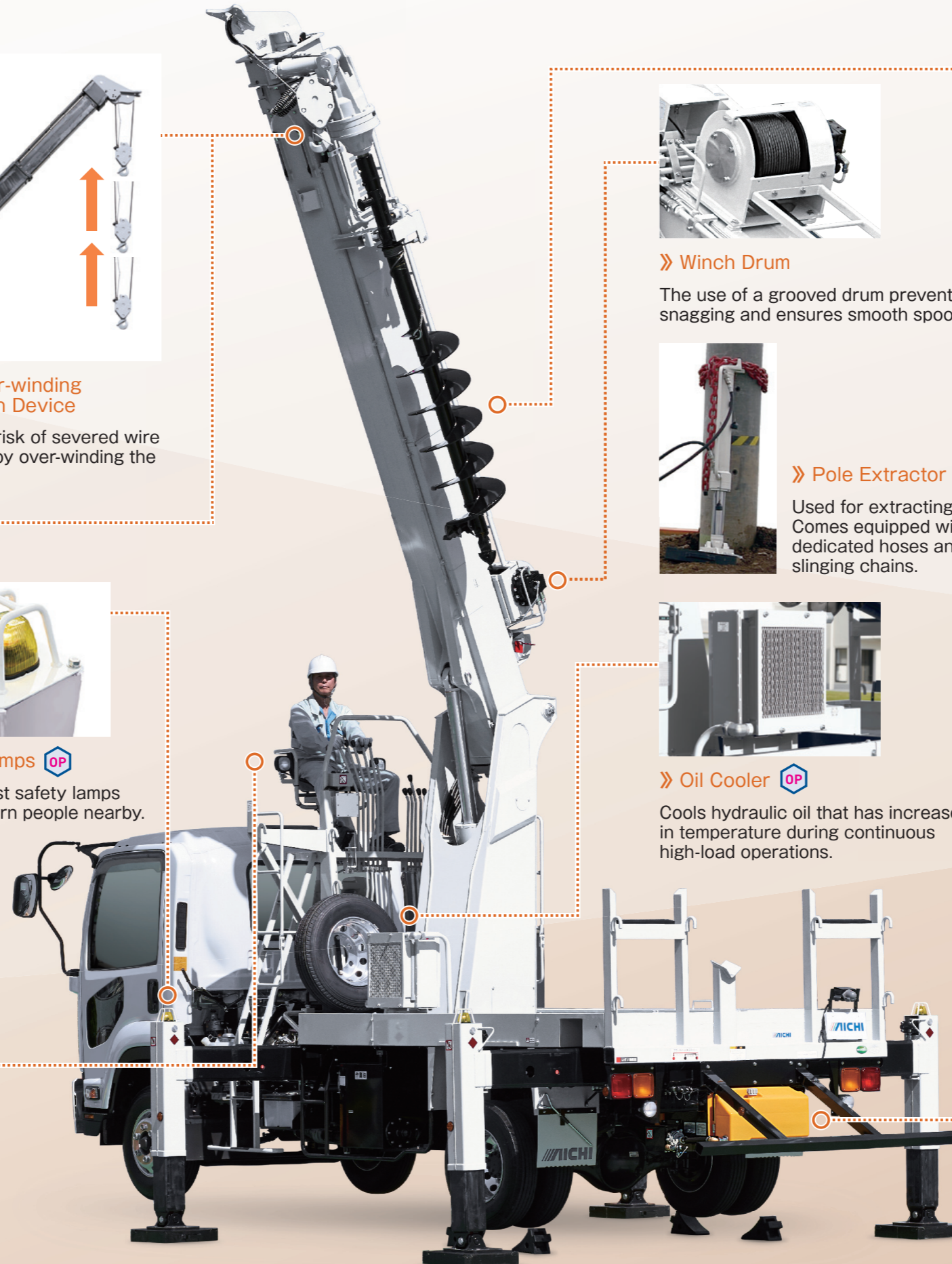
## » Safety Lamps OP

Outrigger post safety lamps turn on to warn people nearby.



## » Multi-operational Lever OP

The crane and auger can be operated using the two multi-operational levers. Changing between operational levers is no longer necessary, which means better work efficiency.



## » Winch Drum

The use of a grooved drum prevents snagging and ensures smooth spooling.



## » Pole Extractor OP

Used for extracting poles. Comes equipped with dedicated hoses and slinging chains.



## » Oil Cooler OP

Cools hydraulic oil that has increased in temperature during continuous high-load operations.



## » Extendable Auger

The auger can be extended by up to 1.92 m in five stages.



## » A-type softrock tooth tip, RN6-type bedrock tooth tip OP

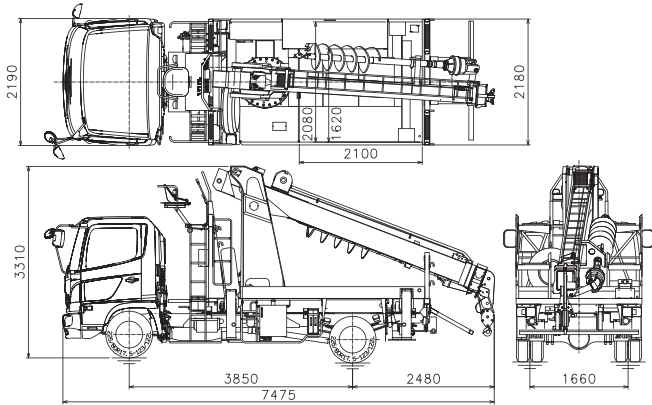
Can be selected and switched based on the surface of the drilling path.  
\* Other product lineups are also available.



## » Water Tank and Electric Pump

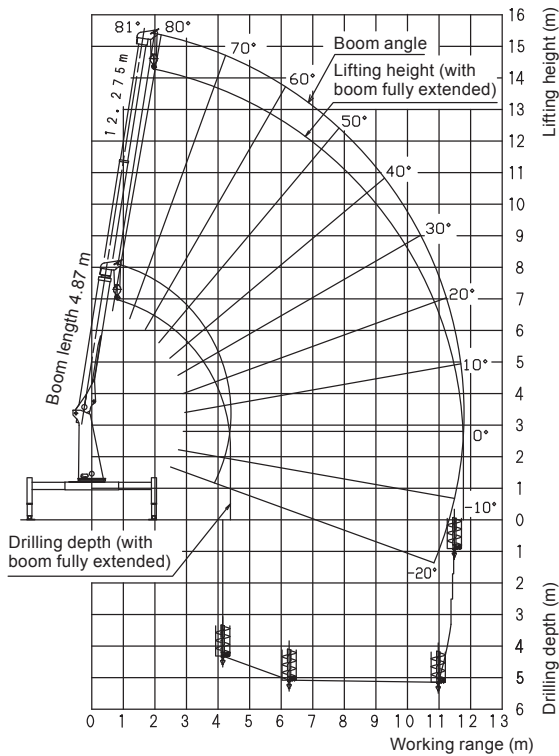
Connecting the dedicated hoses enables cleaning work with high-pressure water.

## VEHICLE DIMENSIONS



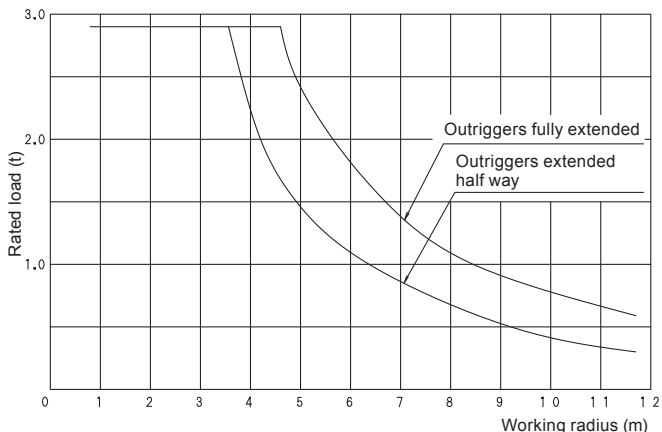
Dimensions may vary depending on chassis configuration.

## WORKING RANGE CHART



This chart does not take into account any deflection of the boom.  
This chart assumes that the machine is set on firm level ground.  
The working range is 190° to the rear of the vehicle.  
Working ranges may vary depending on chassis configuration and/or local standard.

## RATED LOAD CHART



This chart assumes that the machine is set on firm level ground.  
This chart does not take into account the weight of the hook and slinging device.  
The working range is 190° to the rear of the vehicle.  
Rated load may vary depending on local standard.

## MAJOR SPECIFICATIONS

Model	D70A
Type	Digger Derrick
<b>LIFTING</b>	
Max. Load	3.0 tons
Capacity	3.0 t x 4.6m (boom fully extended, maximum elevation angle, outriggers fully extended)
Auger Range	190° from rear (95° to left and right)
Working Range	0.80 - 11.70m
Max. Lifting Height	14.15m
<b>AUGER</b>	
Working Radius	4.16m - 11.40m
Max. Drilling Depth	5.2m
Working Range	190° from rear (95° to left and right)
Drilling Diameter	0.45m
Torque of Auger	725kgf-m
<b>OUTRIGGER</b>	
Extended Width	Front: 1.98-3.9m, Rear: 1.98-3.8m
Stroke	Front: 0.98m, Rear: 0.90m
Jack Stroke	0.4m
<b>ROTATION DEVICE</b>	
Rotation Angle	360°
Rotation Speed	2.5 rpm
<b>BOOM</b>	
Length	4.875m - 12.275m
Angle	-20° - 80°
Elevation Speed	Full stroke: 23sec (raising), 26sec (lowering) (pump at 2,000rpm)
Extension Stroke	3.7m x 2
Extension Speed	Full stroke: 20sec (extension), 24sec (retraction) (pump at 2,000rpm)
<b>WINCH</b>	
Hook Speed	Up: 55m/min, Down: 40m/min (pump at 2,000rpm)
Wire Rope	T7 x 7 + Fi (29) Class B $\Phi$ 10mm
Number of Wires	2
<b>SAFETY DEVICES</b>	
Hydraulic circuit (hydraulic relief valve, holding valves on elevation and extension cylinder, auger over winding prevention device, winch over winding prevention device), Parallel hook movement device, Alarm horn, Hook stopper, Load meter, Boom angle meter, Auger holding device	
<b>OTHER DEVICES</b>	
Engine start and stop device, Jack check valve guard, Variable pole support horns, Water tank with electric pump, Hydraulic power outlet, Tools case, Working light, Three step wire guard	
<b>STANDARD ACCESSORIES</b>	
Jack bases, Wheel chocks, Grounding wire wheel, Sling rope wire, Load lifting and Other	

### Safety instructions



- Operator of the machine must receive safety training to ensure safe operations. Incorrect use of the machine can cause serious injury or death. All personnel are requested to receive safety training and only trained and authorized personnel are permitted to operate the machine.
- Ultimate compliance to national safety regulations is the responsibility of the user and their employer.
- All owners and users of the machine must read, understand, and comply with all applicable regulations.

\*Due to continuous product improvements, we reserve the right to make specification and/or equipment changes without prior notice.

\*The photos and/or drawings in this brochure are for illustrative purpose only.

\*This information, while believed to be completely reliable, is not to be taken as a warranty for which we assume legal responsibility.



1152-10 Ryoke Ageo Saitama 362-8550 Japan  
TEL: +81-48-781-6907 URL: <http://www.aichi-corp.jp>